

Shiftec (Willenhall) Limited is a leading UK manufacturer of Steel, Aluminium and Composite components



Business Overview

- Based in Willenhall, West Midlands. Established over 100 years ago, the company has an extensive Global Customer base.
- Diverse Portfolio of products and capabilities ranging from Composite Manufacture through to Simple Formed Steel Brackets
- Vertical Integration within the business of the capabilities and companies in the group
- In-house design support and capability
- Full Turnkey solution provider
- ISO:9001 Approved
- UCAS Accredited Test Facility

Manufacturing Processes

- Fibre Laser Cutting
- Manual Pressing up to 800T
- Progression Pressing
- Form Bending (Press Brake)
- Composite Manufacture
- MIG Welding
- TIG Welding
- Bonding
- Projection Welding
- Assembly



Materials: Mild steel, High Tensile Steels, Aluminium, Stainless Steel, Carbon Pre-Preg, Fibre Glass Pre-Preg

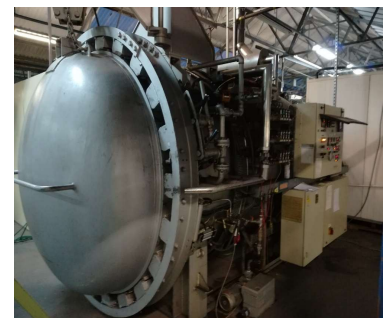
Steel and Aluminium Processing

- Laser cut and fold bracketry
- Pressed components
- Light fabrication
- Mechanical Handbrake Assemblies
- Mechanical Pedal Box Assemblies
- Tubular Assemblies
- Chassis Manufacture



Composite Manufacture

- Pre-Preg Material processing
- Hand Lay up
- Autoclave curing
- CNC controlled material cutting
- SMC Pressed composites



Customers

